



GMT MONTHLY MEMBERSHIP PROGRESS REPORT

Results as of: 5/31/2020

Multiple District 7

LOCATION: ARKANSAS

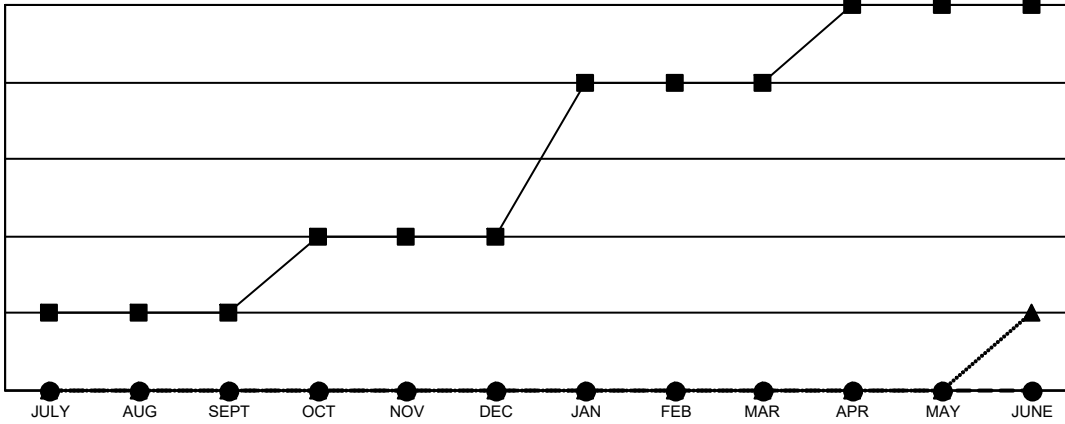
GMT: OPEN

GMT CA 1

| Clubs | | | |
|-----------------------|---------------|-----------|---------------|
| RESULTS FOR 2019-2020 | | | |
| QUARTER | NEW CLUB GOAL | NEW CLUBS | DROPPED CLUBS |
| JULY/AUG/SEPT | 1 | 0 | 1 |
| OCT/NOV/DEC | 1 | 0 | 1 |
| JAN/FEB/MAR | 2 | 0 | 2 |
| APR/MAY/JUNE | 1 | 0 | 0 |

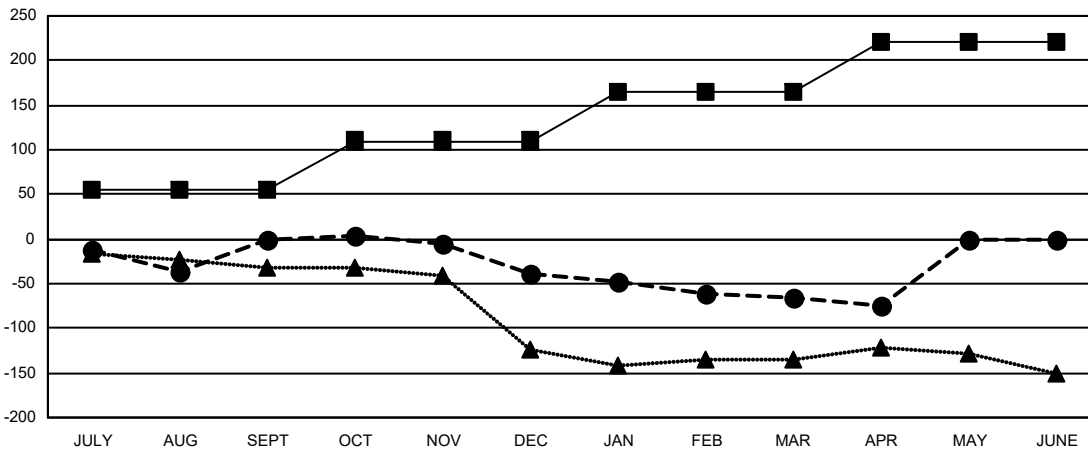
| Members | | | |
|-----------------------|------------------------|----------------------|--|
| RESULTS FOR 2019-2020 | | | |
| QUARTER | MEMBER GROWTH NET GOAL | MEMBER GROWTH ACTUAL | DROPPED MEMBERS ACTUAL (including transfers) |
| JULY/AUG/SEPT | 55 | 111 | 101 |
| OCT/NOV/DEC | 55 | 71 | 105 |
| JAN/FEB/MAR | 55 | 51 | 76 |
| APR/MAY/JUNE | 55 | 7 | 16 |

GOALS AND ACTUAL NEW CLUBS CUMULATIVE



- - CURRENT YEAR GOALS FOR NEW CLUBS
- - CURRENT YEAR ACTUAL NEW CLUBS
- ▲ - LAST YEAR ACTUAL NEW CLUBS

GOALS AND ACTUAL MEMBERS CUMULATIVE



- - MEMBER GROWTH NET GOAL
- - MEMBER GROWTH ACTUAL
- ▲ - LAST YEAR MEMBERSHIP ACTUAL

| | |
|-------------------------|------------|
| DROPPED CLUBS: 4 | |
| DROPPED MEMBERS | |
| DECEASED | 35 |
| CLUB CANCELLED | 7 |
| OTHER | 256 |
| TOTAL | 298 |

65 CLUBS OF 120 ADDED 1 OR MORE NEW MEMBERS

[CLICK HERE FOR CUMULATIVE MEMBERSHIP DATA](#)

| <u>GENDER DISTRIBUTION</u> | |
|---------------------------------|----------------|
| MALE | 1,704 (61.81%) |
| FEMALE | 1,053 (38.19%) |
| TOTAL FAMILY UNIT MEMBERS | 427 |
| FAMILY MEMBERS PAYING HALF DUES | 217 |